



Noise Monitoring Result

Day Time (0700 - 1900hrs on normal weekdays)

Location: M1a - Harbour Road Sports Centre

| Date | Time | Weather | Measurement Noise Level | | | Baseline Level | Construction Noise Level | Limit Level |
|-----------------------|-------|---------|-------------------------|------|------|----------------|--------------------------|-------------|
| | | | Leq | L10 | L90 | Leq | Leq | Leq |
| Unit: dB(A), (30-min) | | | | | | | | |
| 30/04/13 | 10:25 | Fine | 72.7 | 75.5 | 68.0 | 72 | 63 | 75 |
| 07/05/13 | 8:42 | Cloudy | 74.3 | 76.5 | 70.0 | 72 | 70 | 75 |
| 16/05/13 | 11:18 | Cloudy | 73.1 | 75.5 | 68.0 | 72 | 66 | 75 |
| 21/05/13 | 15:40 | Fine | 71.6 | 73.5 | 68.5 | 72 | 72 | 75 |

Location: M2b - Noon-day gun area

| Date | Time | Weather | Measurement Noise Level | | | Baseline Level | Construction Noise Level | Limit Level |
|-----------------------|-------|---------|-------------------------|------|------|----------------|--------------------------|-------------|
| | | | Leq | L10 | L90 | Leq | Leq | Leq |
| Unit: dB(A), (30-min) | | | | | | | | |
| 30/04/13 | 10:50 | Fine | 71.0 | 72.0 | 69.0 | 68 | 68 | 75 |
| 07/05/13 | 9:44 | Cloudy | 73.5 | 76.0 | 70.0 | 68 | 72 | 75 |
| 16/05/13 | 13:00 | Cloudy | 69.5 | 70.5 | 68.0 | 68 | 65 | 75 |
| 21/05/13 | 16:15 | Fine | 74.5 | 78.0 | 70.0 | 68 | 74 | 75 |

Location: M3a - Tung Lo Wan Fire Station

| Date | Time | Weather | Measurement Noise Level | | | Baseline Level | Construction Noise Level | Limit Level |
|-----------------------|-------|---------|-------------------------|------|------|----------------|--------------------------|-------------|
| | | | Leq | L10 | L90 | Leq | Leq | Leq |
| Unit: dB(A), (30-min) | | | | | | | | |
| 30/04/13 | 13:40 | Fine | 67.3 | 69.0 | 64.5 | 69 | 67 | 75 |
| 07/05/13 | 13:00 | Cloudy | 66.7 | 68.0 | 64.5 | 69 | 67 | 75 |
| 18/05/13 | 9:56 | Cloudy | 67.3 | 69.0 | 64.5 | 69 | 67 | 75 |
| 21/05/13 | 8:00 | Fine | 68.4 | 69.0 | 64.5 | 69 | 68 | 75 |

* Due to adverse weather condition, daytime noise monitoring at M3a was rescheduled from 16 May 2013 to 18 May 2013.

Location: M4b - Victoria Centre

| Date | Time | Weather | Measurement Noise Level | | | Baseline Noise Level | Construction Noise Level | Limit Level |
|----------------------|-------|---------|-------------------------|------|------|----------------------|--------------------------|-------------|
| | | | Leq | L10 | L90 | Leq | Leq | Leq |
| Unit: dB(A), (30min) | | | | | | | | |
| 30/04/13 | 13:00 | Fine | 70.5 | 72.0 | 67.5 | 67 | 68 | 75 |
| 07/05/13 | 10:41 | Cloudy | 68.9 | 70.0 | 67.0 | 67 | 64 | 75 |
| 18/05/13 | 10:45 | Cloudy | 69.0 | 70.0 | 67.5 | 67 | 64 | 75 |
| 21/05/13 | 9:00 | Fine | 68.8 | 70.0 | 67.0 | 67 | 63 | 75 |

* Due to adverse weather condition, daytime noise monitoring at M4b was rescheduled from 16 May 2013 to 18 May 2013.

Location: M5b - City Garden

| Date | Time | Weather | Measurement Noise Level | | | Baseline Level | Construction Noise Level | Limit Level |
|----------------------|-------|---------|-------------------------|------|------|----------------|--------------------------|-------------|
| | | | Leq | L10 | L90 | Leq | Leq | Leq |
| Unit: dB(A), (30min) | | | | | | | | |
| 30/04/13 | 14:35 | Fine | 73.0 | 74.0 | 70.5 | 68 | 71 | 75 |
| 07/05/13 | 11:30 | Fine | 67.6 | 68.5 | 64.0 | 68 | 68 | 75 |
| 18/05/13 | 11:28 | Cloudy | 70.1 | 70.5 | 69.0 | 68 | 66 | 75 |
| 21/05/13 | 9:45 | Cloudy | 73.4 | 75.0 | 70.5 | 68 | 72 | 75 |

* Due to adverse weather condition, daytime noise monitoring at M5b was rescheduled from 16 May 2013 to 18 May 2013.



Noise Monitoring Result

Day Time (0700 - 1900hrs on normal weekdays)

Location: M6 - HK Baptist Church Henrietta Secondary School

| Date | Time | Weather | Measurement Noise Level | | | Baseline Level | Construction Noise Level | Limit Level |
|-----------------------|-------|---------|-------------------------|------|------|----------------|--------------------------|-------------|
| | | | Leq | L10 | L90 | Leq | Leq | Leq |
| Unit: dB(A), (30-min) | | | | | | | | |
| 02/05/13 | 15:05 | Fine | 74.9 | 76.0 | 72.9 | 71 | 73 | 70 |
| 07/05/13 | 14:04 | Cloudy | 74.0 | 75.0 | 72.0 | 71 | 71 | 70 |
| 18/05/13 | 14:13 | Cloudy | 72.9 | 74.0 | 70.5 | 71 | 69 | 70 |
| 21/05/13 | 10:30 | Fine | 74.6 | 76.0 | 72.0 | 71 | 72 | 70 |

* Due to adverse weather condition, daytime noise monitoring at M6 was rescheduled from 30 Apr 2013 to 2 May 2013 and from 16 May 2013 to 18 May 2013.

Location: M7e - International Finance Centre (Eastern End of Podium) (Reference Station)

| Date | Time | Weather | Measurement Noise Level | | | Baseline Level | Construction Noise Level | Limit Level |
|-----------------------|-------|---------|-------------------------|------|------|----------------|--------------------------|-------------|
| | | | Leq | L10 | L90 | Leq | Leq | Leq |
| Unit: dB(A), (30-min) | | | | | | | | |
| 30/04/13 | 9:49 | Fine | 72.3 | 73.5 | 69.5 | 67 | 71 | N/A |
| 07/05/13 | 15:47 | Cloudy | 71.3 | 73.0 | 69.5 | 67 | 69 | N/A |
| 16/05/13 | 9:07 | Cloudy | 76.9 | 81.0 | 70.0 | 67 | 76 | N/A |
| 21/05/13 | 13:00 | Fine | 75.9 | 77.0 | 73.5 | 67 | 75 | N/A |

Location: M7w - International Finance Centre (Western End of Podium)

| Date | Time | Weather | Measurement Noise Level | | | Baseline Level | Construction Noise Level | Limit Level |
|-----------------------|-------|---------|-------------------------|------|------|----------------|--------------------------|-------------|
| | | | Leq | L10 | L90 | Leq | Leq | Leq |
| Unit: dB(A), (30-min) | | | | | | | | |
| 30/04/13 | 8:15 | Fine | 67.7 | 69.0 | 65.0 | 69 | 68 | 75 |
| 07/05/13 | 16:28 | Cloudy | 67.3 | 68.5 | 65.0 | 69 | 67 | 75 |
| 16/05/13 | 8:30 | Cloudy | 69.4 | 71.5 | 66.0 | 69 | 69 | 75 |
| 21/05/13 | 13:30 | Cloudy | 72.0 | 76.5 | 66.0 | 69 | 69 | 75 |

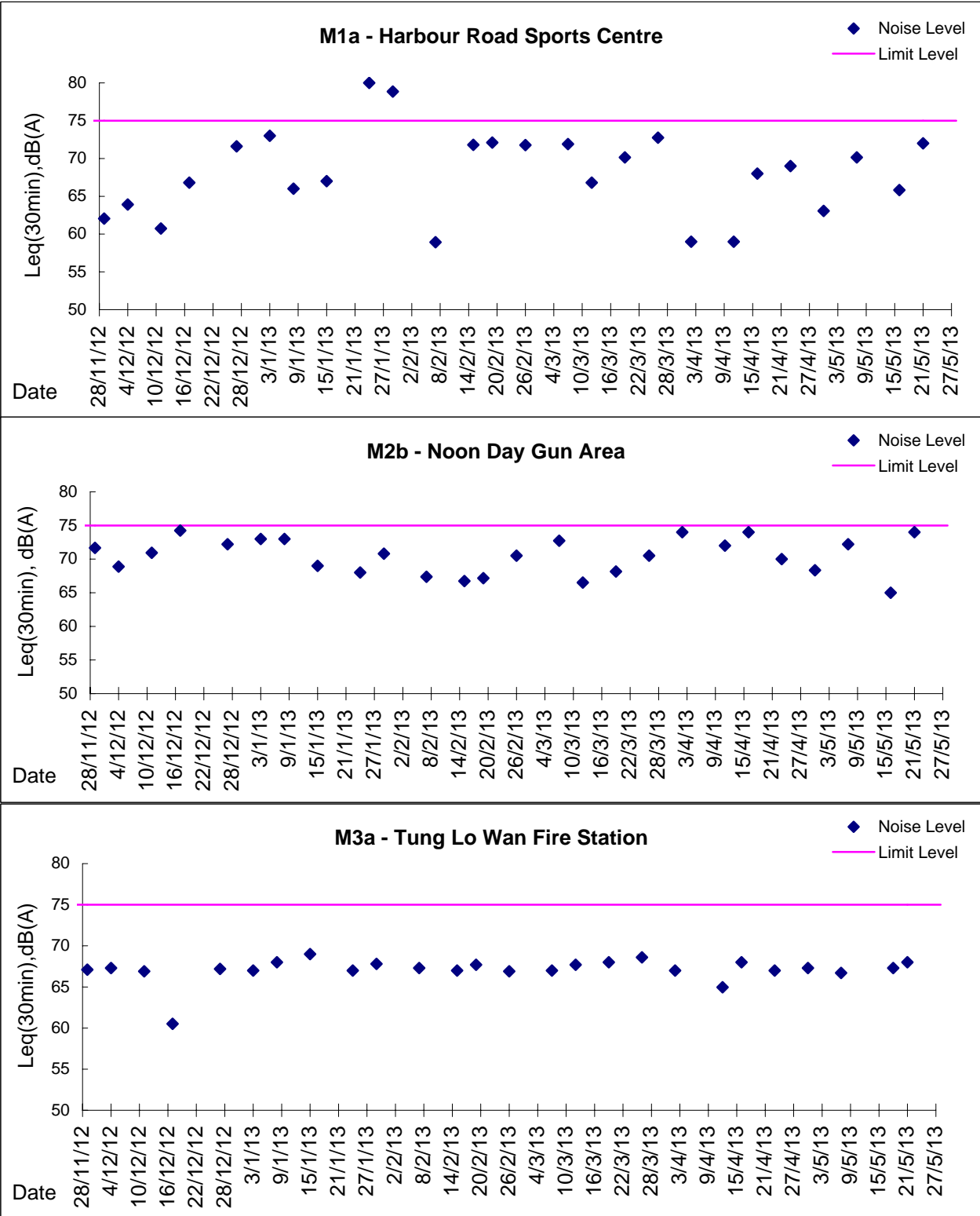
Location: M8 - City Hall

| Date | Time | Weather | Measurement Noise Level | | | Baseline Level | Construction Noise Level | Limit Level |
|-----------------------|-------|---------|-------------------------|------|------|----------------|--------------------------|-------------|
| | | | Leq | L10 | L90 | Leq | Leq | Leq |
| Unit: dB(A), (30-min) | | | | | | | | |
| 30/04/13 | 10:25 | Fine | 61.2 | 62.0 | 58.0 | 64 | 61 | 70 |
| 07/05/13 | 17:21 | Cloudy | 59.3 | 61.5 | 55.5 | 64 | 59 | 70 |
| 16/05/13 | 10:30 | Cloudy | 60.3 | 62.0 | 57.5 | 64 | 60 | 70 |
| 21/05/13 | 14:45 | Cloudy | 60.5 | 62.0 | 57.5 | 64 | 61 | 70 |



Graphic Presentation of Noise Monitoring Result

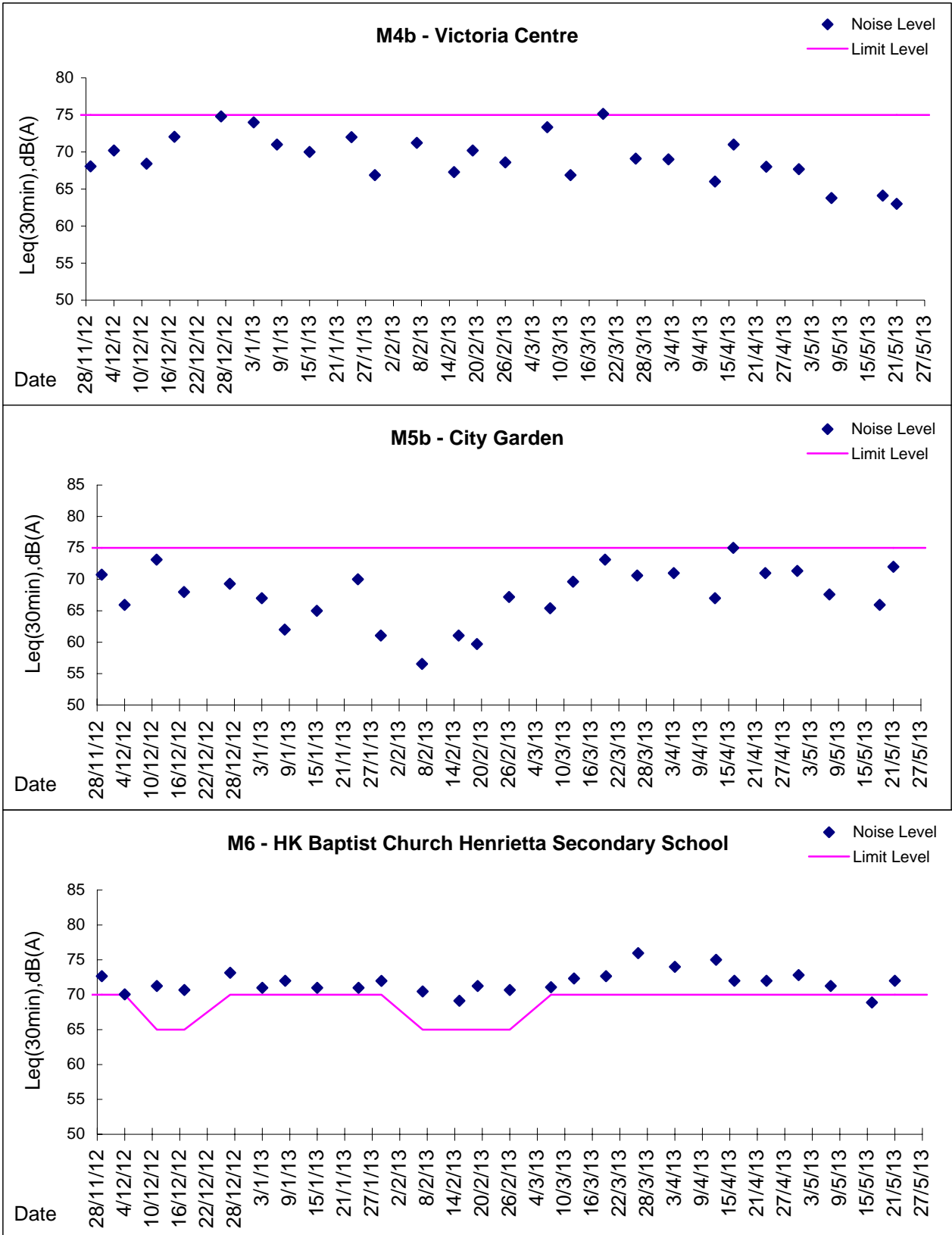
Day Time (0700 - 1900hrs on normal weekdays)





Graphic Presentation of Noise Monitoring Result

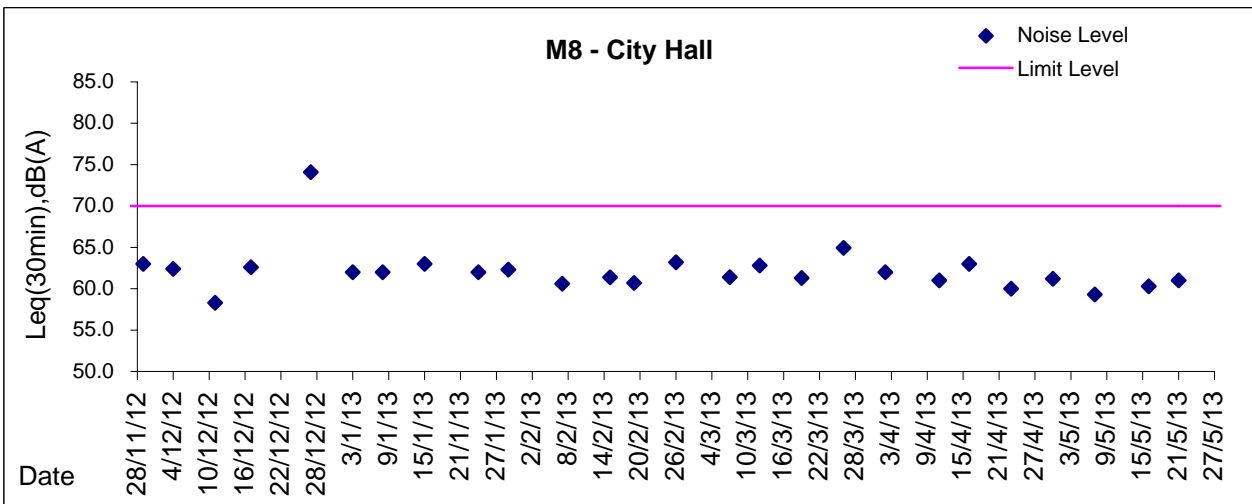
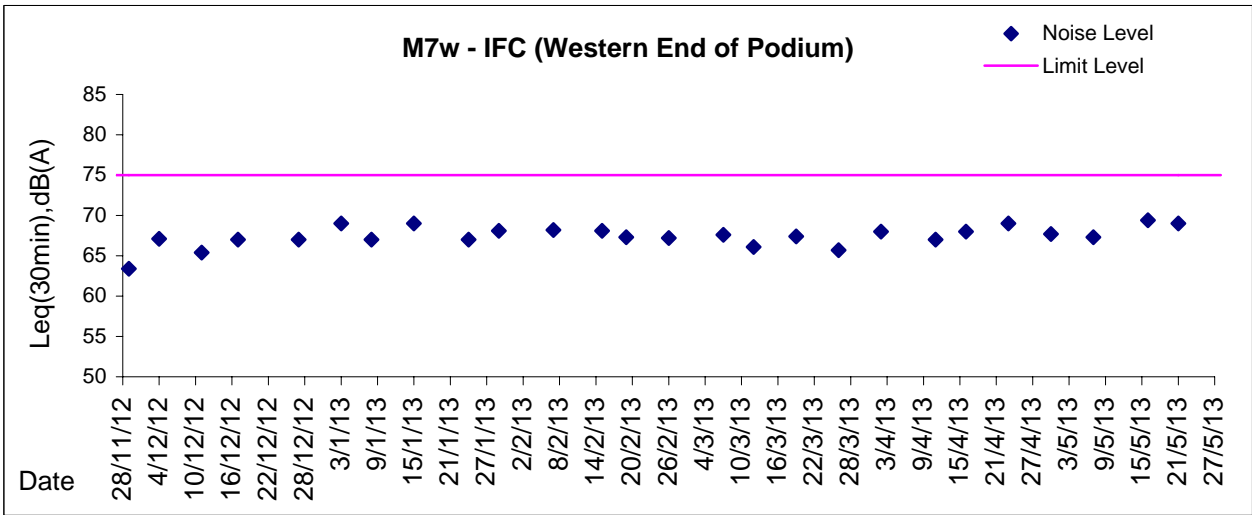
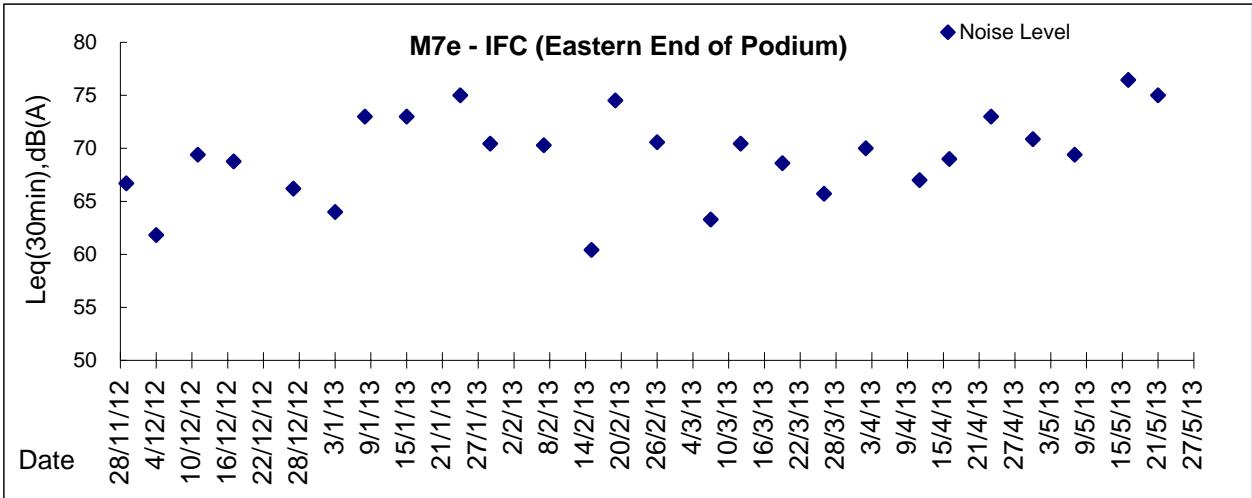
Day Time (0700 - 1900hrs on normal weekdays)





Graphic Presentation of Noise Monitoring Result

Day Time (0700 - 1900hrs on normal weekdays)



* Remark: M7e - IFC (Eastern End of Podium) is a reference monitoring station